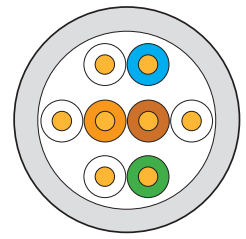
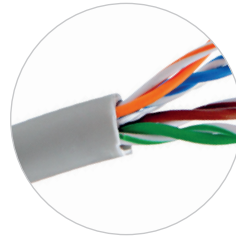
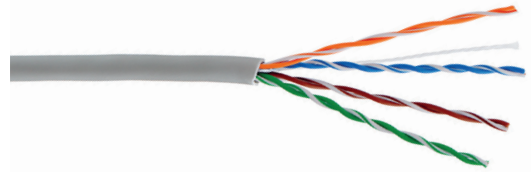


UTP (U/UTP) cable 4x2xAWG24, Category 5E, 300 MHz, LSOH, Euroclass D_{ca} - s1, d1, a1



P/N: KE300U24LSOH-Dca-RLX

1 Gigabit
Cat. 5E
300 MHz
LSOH
D_{ca}

Features

- unshielded cable with LSOH sheath
- enables transmission of all high-speed protocols including 1000BASE-T
- tested in a bandwidth up to 300 MHz
- enables RJ45 connectors to be mounted directly to the cable
- not shielded against electromagnetic interference

Application

- primary (Campus), secondary (Riser), tertiary (Horizontal)
- IEEE 802.3: 10BASE-T; 100BASE-TX; 1000BASE-T
- IEEE 802.5: 16 MB; ISDN; TPDDI; ATM

Construction

Conductor	bare copper wire, AWG24
Insulation	polyethylene, Ø 0,87 mm
Twisting	2 cores to the pair
Cable lay up	4 pairs to the core
Sheath	LSOH, gray RAL 7035
Outer cable diameter	5,3 mm

Reaction to fire and flame resistance

Reaction to fire	D _{ca} - s1a, d1, a1	
Fire safety	flame retardancy	IEC 60332-1-2
	smoke performance	IEC 61034-1, IEC 61034-2
	halogen acidity	IEC 60754-2

Mechanical properties

Min. bending radius	installation	43 mm
	operation	22 mm
Temperature range	installation	0 °C to + 60 °C
	operation	-20 °C to + 60 °C
Max. tensile load	110 N (11 kg)	
Weight	32 kg/km	

Electrical properties at 20°C

Loop resistance	—	≤ 120 Ω/ km
Resistance unbalance	—	≤ 5 %
Insulation resistance	(500 V)	≥ 5 000 MΩ x km
Capacity	at 800 Hz	nom. 56 nF/ km
Capacity unbalance	(pair/ground)	≤ 330 pF/ km
Characteristic impedance	at 100 MHz	(100 ± 5) Ω
Nominal velocity of propagation (NVP)	—	cca 69 %
Propagation delay	Nominal	≤ 538 ns/ 100 m
Delay skew	Nominal	≤ 20 ns/ 100 m
Test voltage	(DC, 1 min) core/core; core/screen	1 000 V
Coupling attenuation	—	≥ 40dB

Transmission properties at 20°C

f (MHz)	Attenuation (dB/100m)	NEXT (dB min)	PS-NEXT (dB min)	ACR (dB/100m)	PS-ACR (dB/100m)	ELFEXT (dB/100m)	PS-ELFEXT (dB/100m)	Return loss (dB)
1,0	1,9	71,0	68,0	69,1	66,1	68,0	65,0	20,0
4,0	3,7	62,0	59,0	58,3	55,3	56,0	53,0	23,0
10,0	6,0	56,0	53,0	50,0	47,0	48,0	45,0	25,0
16,0	7,6	53,0	50,0	45,4	42,4	44,0	41,0	25,0
20,0	8,5	51,0	48,0	42,5	39,5	42,0	39,0	25,0
31,2	10,7	49,0	46,0	38,3	35,3	38,0	35,0	24,0
62,5	15,7	44,0	41,0	28,3	25,3	32,0	29,0	22,0
100,0	19,8	41,0	38,0	21,2	18,2	28,0	25,0	20,0
125,0	22,3	40,0	37,0	17,7	14,7	26,0	23,0	19,0
155,5	24,2	38,0	35,0	13,8	10,8	24,0	21,0	—
175,5	25,7	37,0	34,0	11,3	8,3	23,0	20,0	—
200,0	27,5	36,0	33,0	8,5	5,5	22,0	19,0	—
250,0	29,2	35,0	32,0	5,8	2,8	20,0	17,0	—
300,0	32,0	34,0	31,0	2,0	-1,0	16,0	13,0	—



This product is certified on a component level by 3P international independent laboratories according to ISO/IEC 11801:2017 (Ed.1.0), IEC 61156-5:2012 (Ed.2.1), EN 50173-1:2018, EN 50288-6-1:2013, ANSI/TIA 568.2-D:2018, IEC 60332-1-2, IEC 61034-1, IEC61034-2 Amd.1, IEC 60754-2.

Mass production of this product is under permanent supervision of third party international laboratories performing 3P SURVEILLANCE maintenance testing and quality assurance sites.

The determination of Reaction to Fire Class Performance of this cable has been performed by Product Certification Body notified by European Commission, which also carries out the assessment and verification of constant performance (AVCP) in the System 3.