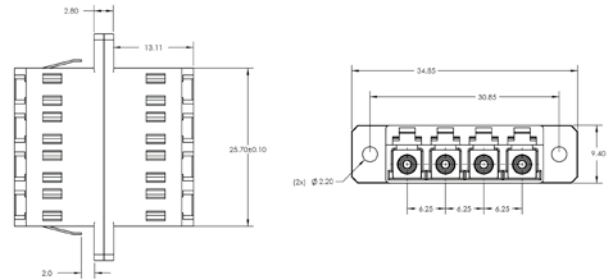
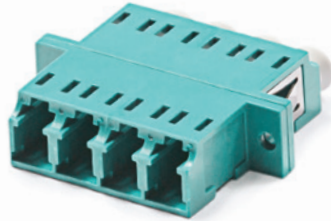


# Multimode adapter LC-LC Quad

P/N: KE-LCD-MM-AQ

**OM3**  
multimode

**OM4**  
multimode



## mechanical properties

Housing material	plastic
Alignment sleeve	ceramic (zirconia)
Insertion loss	< 0,2 dB
Durability	500
Operating temperature	-40°C to +80°C

## related products

P/N: <b>RAB-FO-X38-SL</b>	Sliding patch panel for 24 x SC-SC Duplex or LC-LC Quad adapters
P/N: <b>PIG09-LC-020</b>	Pigtail LC
P/N: <b>RAB-FO-X04</b>	Splice cassette for 16 splices
P/N: <b>F11002</b>	Splice protection