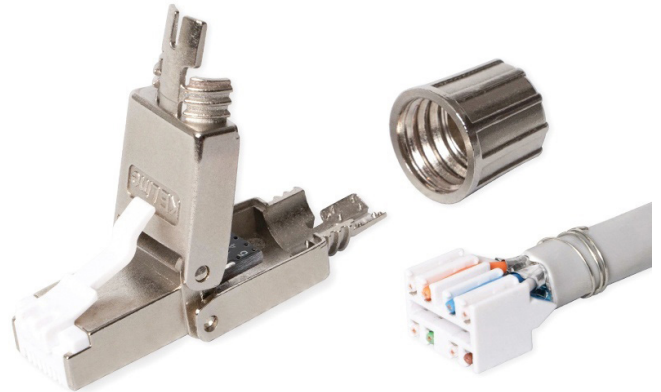


Field terminated, toolless RJ45/s connector for Cat. 7_A, Cat. 7, Cat. 6_A cables

P/N: KE-FFT45-C6AS

10
GigabitCat. 6A
system500
MHz

Features

- direct termination on Cat. 7_A, Cat. 7, Cat. 6_A cables
- tool-free, fast and easy installation
- connection of IP cameras and wireless devices without the need of using outlets and patch cords
- enables transmission of all high-speed protocols including 10GBASE-T within the system Cat. 6A
- guarantees a bandwidth of 500 MHz within the system Cat. 6A
- perfectly shielded against Alien Crosstalk and electromagnetic interference

Mechanical properties

Suitable for installing on	cables with solid wires from AWG 23 to AWG 22 cables with outer diameter 6 - 9 mm
Required installation depth	50,00 mm
Housing material	nickel-plated die-cast zinc
Contact pin material	phosphor-bronze alloy coated with 50 μ of gold
IDC reterminations	min. 5
Insulation resistance	500 MΩ min.
Contact resistance	20 MΩ max.
Current rating	1,5 A
Test voltage	1000 V DC, 1 min.
Temperature range	-20 °C to +70 °C