

Patch panel, Category 6_A, 24xRJ45/s, silver KEJ-C6A-S-10G keystone included

P/N: KEP-C6A-S-10G-NP

10
Gigabit

Cat. 6_A
interoperable

500
MHz

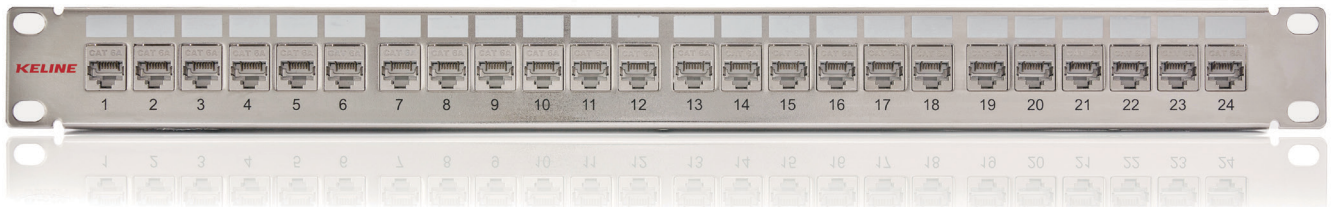


Features

- 24 keystone jacks KEJ-C6A-S-10G included
- designed for 19" cabinets
- integrated cable management
- cable ties for gripping (24 pcs)
- set of M6 screws and captive nuts (4 pcs)
- grounding screw and washer (1 pc)

Application

- primary (Campus), secondary (Riser), tertiary (Horizontal)
- IEEE 802.3: 10BASE-T; 100BASE-T; 1000BASE-T; 10GBASE-T
- IEEE 802.5: 16 MB; ISDN; FDDI; ATM
- high bandwidth digital applications with low BER
- multimedia transmissions like digital and analog video and voice



Construction

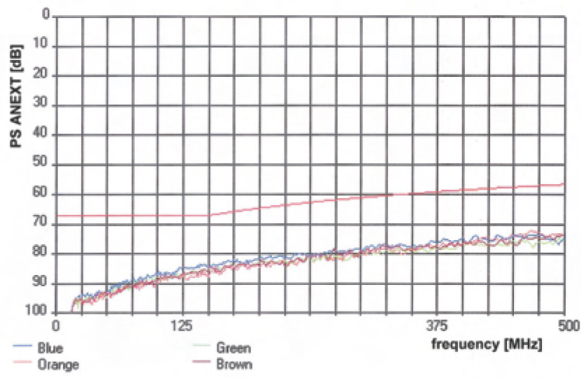
Height	1U (44,5 mm)	
Width	19" (482,6 mm)	
Depth (including cable management)	152 mm	
Material	front face	nickel-plated steel, corrosion-resistant
	cable management	nickel-plated steel, corrosion-resistant
Colour	silver	
Surface	smooth, shiny	

Keystone jack KEJ-C6A-S-10G mechanical properties

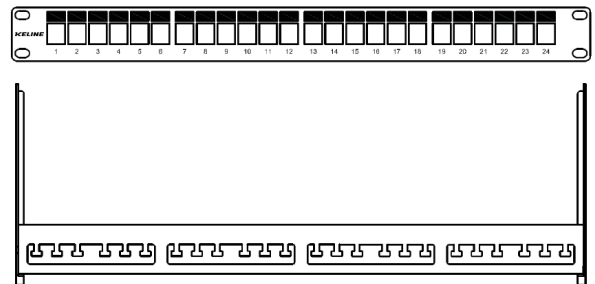
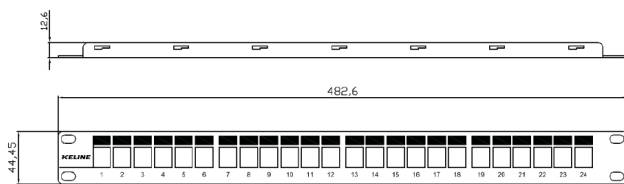
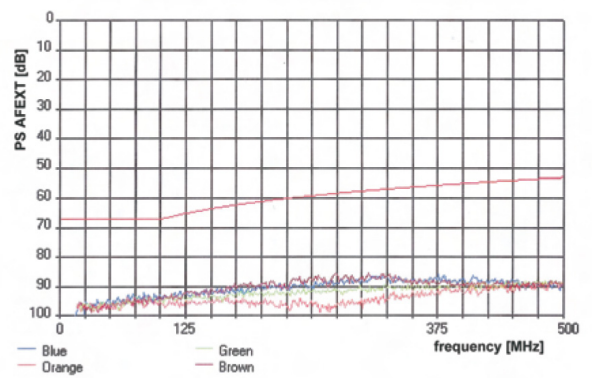
Note: for detailed information see datasheet for keystone jack KEJ-C6A-S-10G

Suitable for installing on	cables with solid wires	from 0,51 to 0,64 mm (from AWG 24 to AWG 22)
	cables with stranded wires	from AWG 26/7 to AWG 24/7
Insertion / extraction cycles	min. 750	
Temperature range	installation	-10 °C to +60 °C
	operational	-40 °C to +70 °C
IDC retermination	min. 20	
Contact pin material	phosphor-bronze alloy coated with 50 μ of gold	

Typical PS ANEXT



Typical PS AFEXT



This product is certified on a component level by FORCE Technology international independent laboratories according to ISO/IEC 11801-1:2017 (Ed. 1.0) / ISO/IEC 11801-2:2017 (Ed. 1.0), IEC 60603-7-51:2010, EN 50173-1:2018 / EN 50173-2:2018, TIA-568.2-D:2018, IEC 60512-99-002:2019.

Mass production of this product is carried out under the supervision of FORCE Technology EC Verified Maintenance of Certification Schedule Quality Audit of the Manufacturer's Production and Quality Assurance Sites.