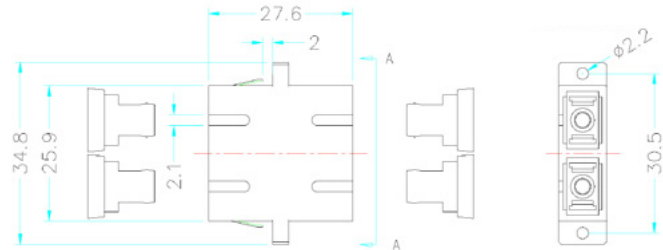
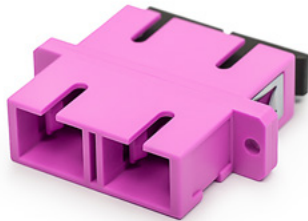


Multimode adapter SC-SC Duplex

P/N: KE-SCD-MM-EV

OM4
multimode



mechanical properties

Housing material	plastic
Alignment sleeve	ceramic (zirconia)
Insertion loss	< 0,2 dB
Durability	500
Operating temperature	-40°C to +80°C

related products

P/N: RAB-FO-X38-SL	Sliding patch panel for 24 x SC-SC Duplex, LC-LC Quad adapters
P/N: PIGOM4-SC-020	Pigtail SC
P/N: RAB-FO-X04	Splice cassette for 16 splices
P/N: F11002	Splice protection