

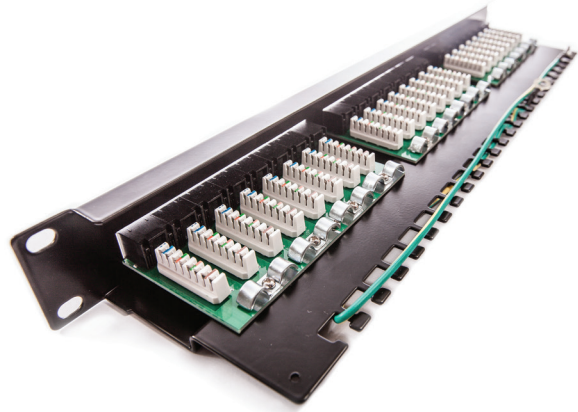
## Patch panel KOMPAKT, Category 5E, 24xRJ45/u

P/N: 606030

1  
Gigabit

Cat. 5E

100  
MHz

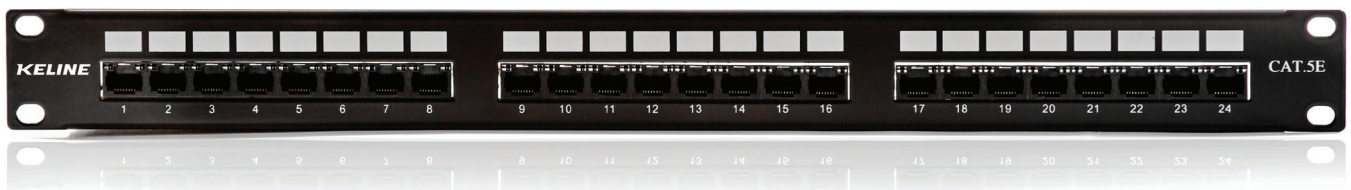


### Features

- 110 / LSA termination blocks
- fast and easy installation using 110 or Krone® insertion tool
- enables transmission of all high-speed protocols including 1000BASE-T
- guarantees a bandwidth of 100 MHz
- cable ties for gripping (24 pcs)
- not shielded against electromagnetic interference
- designed for 19" cabinets
- integrated cable management

### Application

- primary (Campus), secondary (Riser), tertiary (Horizontal)
- IEEE 802.3: 10BASE-T; 100BASE-T; 1000BASE-T
- IEEE 802.5: 16 MB; ISDN; FDDI; ATM



### Construction

Height	1U (44,5 mm)
width	19" (482,6 mm)
Depth (including cable management)	99,3 mm
Material	steel
Colour	black RAL 9005
Surface	structured, matt

**Mechanical properties**

Suitable for cables with solid wires	from 0,51 to 0,64 mm (od AWG 24 do AWG 22)
Insertion / extraction cycles RJ45	min. 750
IDC retermination	min. 20
Contact pin material	nickel plated phosphor-bronze alloy
IDC contact material	plated phosphor/bronze alloy

**Electrical properties**

Current rating	1,5 A max
Insulation resistance	1000 M $\Omega$ max
Dielectric strenght	750 V AC, 60 Hz 1 min
Contact resistance	100 m $\Omega$ max