

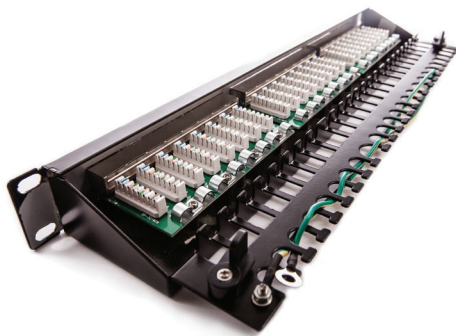
Patch panel KOMPAKT, Category 5E, 24xRJ45/s

P/N: 606029

1
Gigabit

Cat.5E

100
MHz

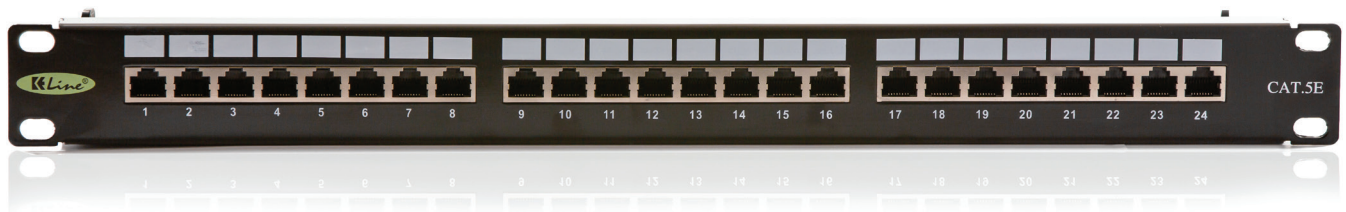


features

- 110 / LSA termination blocks
- fast and easy installation using 110 or Krone® insertion tool
- enables transmission of all high-speed protocols including 1000BASE-T
- guarantees a bandwidth of 100 MHz
- cable ties for gripping (24 pcs)
- perfectly shielded against electromagnetic interference
- designed for 19" cabinets
- integrated cable management

application

- primary (Campus), secondary (Riser), tertiary (Horizontal)
- IEEE 802.3: 10Base-T; 100Base-T; 1000Base-T
- IEEE 802.5 16 MB; ISDN; FDDI; ATM



construction

Height	1U (44,5 mm)
Width	19" (482,6 mm)
Depth (including cable management)	129 mm
Material	steel
Color	black RAL9005
Surface	structured, matt

mechanical properties

Suitable for cables with solid wires	from 0,51 to 0,64 mm (AWG 24 - AWG 22)
IDC contact material	nickel plated phosphor-bronze alloy
Contact pin material	plated phosphor/bronze alloy
IDC retermination	min. 20
Insertion / extraction cycles RJ45	min. 750

electrical properties

Current rating	1,5A max
Insulation resistance	1000 MΩ max
Dielectric strenght	750V AC, 60Hz 1min
Contact resistance	100 mΩ max