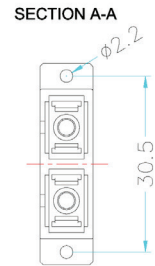
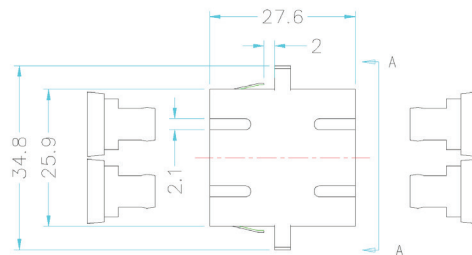
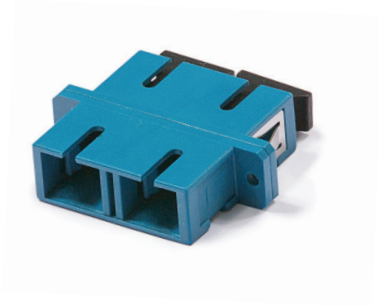


Singlemode adapter SC-SC Duplex

P/N: KE-SCD-SM

OS2
singlemode



mechanical properties

| | |
|-----------------------|--------------------|
| Housing material | plastic |
| Alignment sleeve | ceramic (zirconia) |
| Insertion loss | < 0,2 dB |
| Durability | 500 |
| Operating temperature | -40°C to +80°C |

related products

| | |
|---------------------------|--|
| P/N: RAB-FO-X38-SL | Sliding patch panel for 24 x SC-SC Duplex, LC-LC Quad adapters |
| P/N: PIG09-SC-020 | Pigtail SC |
| P/N: RAB-FO-X04 | Splice cassette for 16 splices |
| P/N: F11002 | Splice protection |